

2024 STUDENT CHARRETTE AT THE GLOBAL LANDSCAPE CONFERENCE, TAIPEI

2024年 台北全球景觀會議學生設計營

Sustaining Life for all

Landscape carries the essence of culture and nurtures sustainable living for all.

永續共生--景觀承載文化的精髓，並培育永續的生活



2024 GLOBAL
LANDSCAPE ARCHITECTURE
CONFERENCE

全球景觀研討會

STUDENT CHARRETTE

APPLICATION DEADLINE : JUNE 30, 23:59(GMT)

學生設計工作營



景觀
研二



SUSTAINING LIFE FOR ALL

2024.10.08-10.11

Taipei

永續共生

CONTENTS

PREFACE

1.BACKGROUND -----	01
2.WHAT IS LANDSCPE -----	02
3.OBJECTS -----	03
4.SITE -----	04
5.LOGO-----	05

GENERAL TERMS

1.ELIGIBILITY&2.ADMISSION -----	06
3.APPLICATION -----	07
4.GROUP -----	08
5.TIMELINE -----	09
6.PARTICIPATION IS FREE&7.AWARDS -----	10
8.TIMETABLE (TENTATIVE) -----	11
9.VENUE -----	13
10.ACOMMEDATION -----	14
11.TRANSPORTATION -----	15
12.ORGNIZER -----	16
13.IMPORTANT REMARKS -----	18

PROJECT SITE

1.SITE LOCATION -----	19
2.DESIGN SITE ZONING -----	20
3.BASIN&MOUNTAIN&RIVER -----	26
4.LAND USE SURVEY ANALYSIS -----	27
5.TRANSPORTATION ANALYSIS -----	28
6.URBAN OPEN SPACE ANALYSIS -----	29
7.HUMANITIES RESOURCES ANALYSIS -----	30

1.BACKGROUND

The Student Charrette at the Global Landscape Conference Taipei is an intensive workshop open to students of Landscape Architecture Programs from around the world, it is one of IFLA GSP(Global Student Program). This Student Charrette is planned by the 2024 Global Landscape Conference Taipei Organizing Committee and organized by the Taiwan Institute of Landscape Architecture (TILA) and Fu Jen Catholic University, Dept. of Landscape Architecture

We welcome undergraduate and graduate students majoring in landscape architecture and related fields worldwide to apply for participation in a two-week online seminar and a four-day in-person workshop in Taipei. Through this program, participants will explore the historical and cultural dimensions of Taipei's Yuanshan area and generate proposals for sustainable and livable urban blue and green infrastructure through landscape planning and design.


Students hailing from various cultural backgrounds will have the opportunity to converge, engage in meaningful interactions, exchange ideas, and, notably, enjoy themselves. During the Student Charrette, attendees will be grouped into teams, each receiving guidance from both academic and professional mentors to cultivate innovative and distinct concepts.

在台北全球景觀會議的學生設計營是一個連結世界各地景觀建築課程的學生密集設計工作坊，這是IFLA全球學生計畫（Global Student Program，簡稱GSP）之一。這個學生激辯賽由2024年台北全球景觀會議籌備委員會策劃，由中華民國景觀建築學會和輔仁大學景觀建築學系主辦。

我們歡迎世界各地主修景觀建築和相關領域的大學和研究生申請參加於台北舉辦為期兩週的線上研討會和為期四天的實地工作坊。藉由這個活動，參與者將探索台北圓山地區的歷史和文化維度，並提出關於永續和宜居城市藍綠基礎設施的景觀規劃和設計方案。

來自全球不同文化背景的學生將有機會匯聚在一起，進行有意義的互動，交流思想，並且特別重要的是，享受其中。在學生設計營期間，參與者將被分為小組，每個小組都將得到學術和專業導師的指導，以培養創新和獨特的概念。

2. WHAT IS LANDSCAPE



Landscapes serve as significant expressions of culture, reflecting the lifestyles, values, and aesthetic preferences of local populations. Across different regions, landscapes manifest diverse cultural identities. Landscapes play a pivotal role in realizing sustainable living. Well-designed landscapes offer a plethora of ecosystem services, including air purification, climate regulation, and biodiversity conservation, thereby creating a healthy living environment for humanity. Urban green spaces mitigate the urban heat island effect, enhancing the comfort and quality of life for city dwellers, while wetlands and forests regulate hydrological cycles, reducing the occurrence of flooding disasters. By carefully planning and managing landscapes, we can maximize their ecological functions, fostering harmony between humans and nature.

Landscapes, as carriers of culture and promoters of sustainable living, play crucial roles in contemporary society. By harnessing the cultural and ecological functions of landscapes, we can achieve symbiotic relationships between humans and nature, driving forward sustainable societal development. Therefore, it is imperative to strengthen landscape conservation and management, emphasizing the cultural and ecological values of landscape design, and striving to create ecologically and culturally sustainable landscapes conducive to human flourishing and sustainable development.

景觀作為文化的重要表達方式，反映了當地人民的生活方式、價值觀念和美學偏好。在不同地區，景觀展現了多樣化的文化身份。景觀在實現可持續生活方面發揮著至關重要的作用。設計良好的景觀提供了豐富的生態系統服務，包括空氣淨化、氣候調節和生物多樣性保育，從而為人類創造了健康的生活環境。城市綠地減輕了城市熱島效應，提升了城市居民的舒適度和生活品質，而濕地和森林調節了水文循環，減少了洪災的發生。通過精心規劃和管理景觀，我們可以最大程度地發揮其生態功能，促進人與自然之間的和諧。

景觀作為文化的承載者和永續生活的促進者，在當代社會中發揮著至關重要的作用。藉由妥適利用景觀的文化和生態功能，我們可以實現人類與自然之間的共生關係，推動可持續社會發展。因此，加強景觀保護和管理至關重要，強調景觀設計的文化和生態價值，並努力創建有利於人類繁榮以及促進生態和文化的可持續性景觀。

3.OBJECTS

- Landscape Patterns and Processes
景觀模式與過程
- Environmental and Waterfront Mitigation
環境和水岸修復
- Biodiversity and Ecosystem Services
生物多樣性與生態系統服務
- Climate Change adaptation and Resilient landscapes
氣候變化適應與彈性景觀
- Collective Memory, Heritage Planning & Conservation
集體記憶、遺產規劃與保育
- Diversity, Equity, Inclusion, and Cultural Sustainability Landscapes
多樣性、公平、包容和文化可持續性景觀





4. SITE

The vicinity of Taipei Yuanshan serves as the designated location for the 2024 Student Charette in Taipei, situated in the heart of the Taipei Basin. It offers a rich natural and cultural landscape environment, providing landscape-related students with opportunities for design exploration. The aim is to enhance their capabilities in urban ecosystem and cultural landscape planning and design. By engaging with the natural beauty, cultural heritage, and ecological context of the site, as well as immersing themselves in this vibrant urban environment, students can gain practical experience and lay the foundation for a successful career in landscape architecture. Additionally, they contribute to the improvement of urban livability and sustainability. Furthermore, students can gain deeper insights into the complexities of landscape architecture while refining their skills in design innovation, cultural sensitivity, and environmental stewardship.

台北圓山周邊作為本次學生設計營基地，基地位於台北盆地核心，為景觀相關系所的學生提供了一個豐富的设计基地環境，以深化其都市生態系統和文化景觀規畫設計能力。藉由與自然美景、文化遺產和生態背景互動，沉浸在這個充滿活力的都市環境中，學生可以獲得實踐經驗，為其在景觀建築領域取得成功打下基礎，同時促進城市宜居性和可持續性的提升。學生借此得以深入了解景觀建築的複雜性，同時培養他們的設計創新、文化敏感性和環境保護意識。

5.LOGO

Prehistoric relics such as shell mounds have been unearthed in the Yuanshan region, dating back thousands to hundreds of years. The logo represents the 'Yuanshan' site in Taipei, with the character '圓' (yuan) symbolizing the concept of circle, deriving from the ideogram '圓' which incorporates the '貝' (bei) radical resembling a shell, representing the archaeological excavation of shell mounds from the historical Yuanshan period in the Yuanshan area. This serves as the symbolic totem for the Student Charrette.



圓山地區曾出土史前時代的遺跡，如貝塚等，這些遺跡可能距今數千年至數百年不等。此標誌代表了臺北的“圓山”基地，“圓”字象徵著圓圈的概念，源自於象形文字“圓”，其中包含了“貝”字作為部首，形似貝殼，代表了圓山地區歷史時期的貝殼遺址考古挖掘，以此作為設計工作坊的象徵圖騰。

1. ELIGIBILITY

Students majoring in landscape architecture all over the world (including graduate students). Students must be active students/enrolled in a program when the charrette takes place. Proficiency in the English language, ability to use drawing and visualization programs, etc. is crucial to apply for student charrette.

世界各地（包括研究生）主修景觀建築的學生。學生必須是就學狀態，以及參與設計工作營時必須活躍積極。申請參與設計工作營的學生必須具備良好的英語能力，並且能夠使用繪圖和視覺化軟體等景觀溝通技能。

2. ADMISSION

A total of 60 students all over the world (5 IFLA Regions) The 2024 Student Charrette Taipei Committee will review the application and select 60 participants in total. (including GSP students in-person)

總共來自世界各地的60名學生（涵蓋5個IFLA區域）。2024年台北學生設計工作營委員會將審查申請並選出總計60名參與者。（包括親自參與的GSP學生）

3. APPLICATION

Students must apply through the provided webpage link: [2024 GLAC - Student Charrette Registration \(jotform.com\)](https://2024-glac-student-charrette-registration.jotform.com) using the application form, which allows you to upload your letter of intent, proof of enrollment, academic transcript, sample works/portfolio, and enter your personal information. Please ensure all required documents are uploaded before the application deadline.

學生必須通過提供的網頁連結進行申請：[2024 GLAC - Student Charrette Registration \(jotform.com\)](https://2024-glac-student-charrette-registration.jotform.com)，使用申請表格進行申請。該申請表格可讓您上傳您的申請意向書、註冊證明、成績單、作品範例/作品集，以及輸入個人資訊。請確保在申請截止日期前上傳所有所需文件。

(1) Letter of Intent: 2-4 pages (A4 size), please describe yourself and why you should be admitted into the Charrette. Include self-introduction, purpose of participation, etc. There is no specified format for the application. It should be saved as a PDF.

意向書：2-4頁（A4尺寸），請描述自己以及參加設計營的意圖與期待。包括自我介紹、參與目的等。申請書的格式沒有明確規定，應保存為PDF格式。

(2) Proof of Student Enrollment: All participants must be enrolled in a program at the time of the charrette and submit a Student Certificate.

學生註冊證明：所有參與者在設計營舉行時必須具備學生身分，並提交學生證明。

(3) Academic Transcript: Provides a record of academic performance throughout the years of enrollment.

學業成績單：提供在就讀期間的學業表現記錄。

(4) Sample works from your studio projects or portfolio (in ".pdf" format with a high resolution) up to 5 pages.

個人的設計作品集（以".pdf"格式高解析度，最多5頁）。

4.GROUP

The 60 participants will be divided into ten groups, assigned to work on design themes at five bases (with two groups allocated to each base). Each group will be led by two design mentors. The list of international tutors will be announced later for confirmation.

60位學員將分為十個小組, 分派至五個基地操作設計主題 (一個基地分配兩個小組), 每小組由兩位設計指導老師, 國際指導老師名單將後續確認公告。



5. TIMELINE

Schedule	Date
公告週知 Announcement	May 3, 2024
Application Deadline 申請截止	June 30 at 23.59 (GMT)
Notification of Selection Result 錄取結果通知	July 28 (The selected students will be contacted individually)
Phase 1 Online Design Workshop 線上工作坊	Aug 21 – 27 (Phase 1-1) Sep 9 – 15 (Phase 1-2*)
Phase 2 In-Person Design Workshop in Taipei 實體工作坊	Oct 8 – 10
頒獎與成果展覽 Awards & Works Exhibition	Oct 11 – 12 Venue: Taipei World Landscape Architecture Conference

*It might also take the weekends of 9/13, 14 and 9/20, 21 for online meetings in the Phase 1-2. The schedule will be arranged according to the instructions of each group's assigned tutors.

6. PARTICIPATION IS FREE

To encourage interested and capable students to participate, all selected students attending the workshop will do so free of charge. We will provide breakfast, lunch, 4 nights of accommodation, site visit, and program participation. (It does NOT include personal expenses such as flights, travel insurance, shopping, touristic visits, dinner, etc.)

為了鼓勵有興趣且能力優秀的學生加入，所有被遴選參加工作坊的學員將免費參加，設計營將提供早餐、午餐、四晚住宿、基地參訪以及參加活動。(不包括個人費用，如機票、旅行保險、購物、旅遊觀光、晚餐等)

7. AWARDS

- Two Excellent awards will be given respectively 1,000 US dollars
- Four Honor Awards will be given respectively 500 US dollars
- The final award results and projects will be publicly presented and exhibited at the 2024 Global Landscape Conference Taipei Venue.

- 將分別頒發兩個優秀獎，每組獲得1,000美元。
- 將分別頒發四個榮譽獎，每組獲得500美元。
- 最終獲獎結果和作品將在2024年台北國際景觀會議現場頒獎與展覽。

8. TIMETABLE (TENTATIVE)

2024-10-8 (First Day 第一天)

TIME	AGENDA		
08:30-09:00	Check-in		
09:00-09:05	Opening Remarks	Chair of TSCC	Dr. Huang, Wen-Shan w/Instructor Introductions
09:05-09:30	Guest speech	Present of FJCU	Dr. Lan, Yizhen
		Chair of IFLA EAA	Dr. Alessandro Martinelli
		Director of New Taipei City	
		Director of the Ministry of Education	
09:30-09:40	Group Photo & Tea Break		
09:40-12:00	Design Workshop		
12:00-13:30	Lunch Break		
13:30-18:30	Site Visit and Experience of Taiwanese Culture		
18:30-21:00	Welcome Party /Ground Hotel		

2024-10-9 (Second Day 第二天)

TIME	AGENDA
08:00-08:30	Sign-in
08:30-10:00	Design Workshop
10:00-10:10	Tea Break
10:10-12:00	Design Workshop
12:00-13:00	Lunch Break
13:00-18:00	Design Workshop
15:30-16:00	Tea Break
16:00-20:00	Design Workshop

2024-10-10 (Third Day 第三天)

TIME	AGENDA
08:00-08:30	Sign-in
08:30-10:00	Design Workshop
10:00-10:10	Tea Break
10:10-12:00	Design Workshop
12:00-13:00	Lunch Break
13:00-16:00	Design Workshop
16:00*	*Deadline for submission of PDF file of complete design drawings.
16:00-16:30	Tea Break
16:30-	Complete the presentation PPT file. Final report rehearsal.

2024-10-11 (Fourth Day 第四天)

TIME	AGENDA
09:30 – 09:55	2024 Global Congress Opening Ceremony
09:55 – 10:20	Guest speech
11:30 – 12:30	Keynote Speech
12:30 – 13:30	Lunch Break
13:30 - 16:00	Final Presentation Juries: Dr. Niall Kirkwood (Harvard University) Dr. Gunther Vogt (Chair of ETH Zurich) Dr. Alessandro Martinelli (Chair, IFLA EAA) Dr. Wen-Shan Huang (Chair, IFLA-APR EAA)
16:00 - 16:30	Student Award Ceremony
2024-10-11~12	Student Works Exhibition

**Venue: Multi-functional Conference Hall, Songshan Cultural and Creative Park, Taipei City
舉辦會場:台北市松山文創園區多功能會議廳

9. VENUE

The venue of student charrette takes place at The International Conference Hall at Fu Jen Catholic University, New Taipei City

1. Located in New Taipei City, conveniently accessible via Fu Jen University MRT Station.
2. Situated within the campus of Fu Jen University, offering a safe, comfortable, and beautiful environment.
3. Entire floor dedicated exclusively to the design workshop, effectively avoiding external disturbances.
4. Multi-functional conference hall and discussion rooms provide high-quality venues for workshops, presentations, and critiques

本次國際學生設計營，預計於天主教輔仁大學「濟時樓國際會議廳」進行

1. 位於新北市, 捷運輔大站, 交通便捷。
2. 位於輔大校園內, 安全舒適優美的校園環境。
3. 整層為設計營隊獨立專用, 有效避免外界干擾。
4. 多功能會議廳與討論教室 提供優質專題課程與成果發表評圖空間。



10. ACCOMMODATION

Chientan Youth Activity Center is situated on the west bank of Keelung River in Chientan, Taipei, able to provide lodging for up to one thousand people. It is China Youth Corp's training center with the largest capacity, and is a venue that provides the most comprehensive services

Under the guidance of the Tourism Bureau, the various China Youth Corp youth activity centers have become part of Hosteling International, and forms part of the platform for receiving young international travelers. They are also accredited by the Tourism Bureau as Taiwan Traveler Card affiliated stores, and has become the best option for government employees on their travels or vacations. Ten floors of lodging area in step-wise structure that is linked to the five-floor siheyuan building, where you can view Guanyin mountain and the mountains by Tamsui river mouth in the distance.

MRT Chientan station is a stone's throw away; Shilin night market, Chiang Kai-shek official residence, Yangmingshan national park, Tamsui scenic area and other attractions are also within the MRT's reach, making the center a perfect starting point for travelers.

劍潭海外青年活動中心，座落台北市劍潭西隅基隆河畔，可供1000人食宿，為救國團容量最大之研習訓練中心，亦為台北市區綜合功能之教育住宿場地。救國團各地青年活動中心在觀光局主導安排下，現為「國際青年旅舍」會員，同時也是經觀光局核定之「國民旅遊卡」特約店，除了提供給國際青年朋友分享交流的平台，亦為公務人員渡假旅遊最佳的選擇。住宿區以十層面向大草坪階梯式漸降為五層之四合院建築物為主，可遠眺觀音山與淡水河口群山。捷運建潭站近在咫尺；士林夜市、蔣介石官邸、陽明山國家公園、淡水景區等景點也都在捷運的範圍內，使該中心成為旅客的完美起點。



Chientan Youth Activity Center – 救國團劍潭青年活動中心

11. TRANSPORTATION

Total time spent: about 53 minutes

- Chientan Youth Activity Center
劍潭青年活動中心
- Walking
about 13 minutes, 850 meters
- Jiantan MRT station
- Tamsui-Xinyi Line**
Go to Da'an or Xiangshan
about 3 minutes
- Minchuan Rd. MRT station
- Walking
about 2 minutes
- Minchuan Rd. MRT station
- Zhonghe-Xinlu Line**
Go to Huilong
about 17 minutes
- Fu Jen Catholic University
MRT station
- Walking
about 10 minutes, 550 meters
- Fu Jen Catholic University
The International Conference Hall



12. ORGANIZER

1-1 Taiwan Institute of Landscape Architecture (TILA) was established in 1994 and serves as a primary contact point and advisory body for government agencies (Ministry of the Interior Construction and Planning Agency, Ministry of Transportation, Council of Agriculture, Ministry of Culture, Environmental Protection Administration, etc.) regarding landscape affairs. It plays a crucial role in promoting the establishment of relevant systems for landscape initiatives such as landscape laws, landscape master plans, cultural landscapes, key landscape projects, and landscape improvement plans. The institute has accumulated extensive experience in policy trends related to landscape promotion and communication and coordination with central authorities. Main mission and objectives:

1. Enhance professional knowledge in landscape and promote awareness of landscape and the concept of sustainable environmental use through organizing professional landscape events and publishing related publications.
2. Provide services related to landscape planning, design, construction, and operational management.
3. Facilitate international exchange and cooperation among landscape organizations.
4. Promote the establishment of the national landscape architect examination system and the appointment system for landscape professionals.
5. Elevate the professional status and service quality of domestic landscape consulting companies.
6. Conduct certification for domestic private landscape architects and promote the professional status of certified landscape architects.

景觀學會成立於1994年，是政府單位針對景觀業務的主要聯繫窗口與諮詢機構。是推動景觀法、景觀綱要計畫、文化景觀、重點景觀計畫、景觀改善計畫等景觀推動相關體制建立的主要推手。對於景觀推動的政策走向與中央單位溝通協調具有長期累積的經驗。主要任務宗旨：

1. 提升景觀專業知識及景觀教育，推廣景觀意識及永續環境使用之觀念，舉辦景觀專業活動，出版相關刊物。
2. 提供景觀規劃、設計、施工及經營管理等相關服務事項。
3. 推動國際間景觀組織之交流及合作。
4. 推動景觀師考試制度之建立及景觀專業人員任用制度。
5. 提升台灣景觀顧問公司之專業地位及服務品質。
6. 辦理台灣民間版景觀師認證及推動認證景觀師之專業地位。



1-2 The Department of Landscape Design at Fu Jen Catholic University
The Department of Landscape Design at Fu Jen Catholic University is located in New Taipei City, Taiwan. Established in 1989, it upholds the educational spirit of truth, goodness, beauty, and holiness of Fu Jen University. In alignment with the comprehensive development plan of Catholic schools and the pursuit of internationalization, integration, refinement, and institutionalization, the department aims to promote environmental quality, serve communities, and benefit society as its primary goals.

As part of the College of Arts, the department provides students with opportunities to exchange ideas with talents in various fields of art and design. Guided by the teaching philosophy of "Tao, Nature, Care for Locality," it combines landscape theory with professional practice to realize the teaching objectives of "sustainable ecological design and ideal landscape aesthetics." Through interdisciplinary environmental planning and design, it actively cultivates professionals in landscape planning and design who possess both technical expertise in landscape architecture and artistic aesthetics.

The department responds to current issues such as ecological environment, climate change, and cultural and social aspects using professional knowledge to effectively utilize and maintain resources. Its aspiration is to create high-quality living environments suitable for human habitation through the application of landscape expertise.

天主教輔仁大學景觀設計學系座落於台灣新北市，成立於1989年，秉承輔仁大學真、善、美、聖的辦學精神，配合天主教學校校務發展計畫的內涵，延續實踐學校國際化、整合化、精緻化、制度化的宏觀教育理念，建構景觀專業教育的學術宗旨，以提升環境品質，服務人群，造福社群為主要目標。

輔大景觀設計學系隸屬於藝術學院，提供學生擁有與各種不同領域的藝術和設計人才交流之機會，本著「道法自然與關懷在地」的教學理念，結合景觀理論與專業實務，落實「永續生態新設計、理想景觀新美學」教學目標，進行跨學科環境規劃設計教學實踐，積極培育具有景觀專業技術，並兼具藝術美學之環境計畫與景觀設計之專業人才。以景觀專業回應當前各種生態環境氣候變遷與文化社會等議題，運用專業知識有效地使用及維護各項資源，以創造適合人類居住之高品質生活環境為職志。

13.IMPORTANT REMARKS

Late submissions will not be accepted, and any potential extension of the deadline will be determined by the organizing committee. To stay informed of announcements or updated information, please visit the official website of the 2024 Global Landscape Conference, Taipei at <https://2024glac.tw/>

Please direct any inquiries to the 2024 Global Student Charrette, Taipei Organizing Committee <https://2024glac.tw/>

2024 Global Student Charrette, Taipei/ Chair: Assoc. Prof. Dr Wen-Shan Huang

2024 Global Committee Members: Chairs of landscape departments at Taiwanese universities



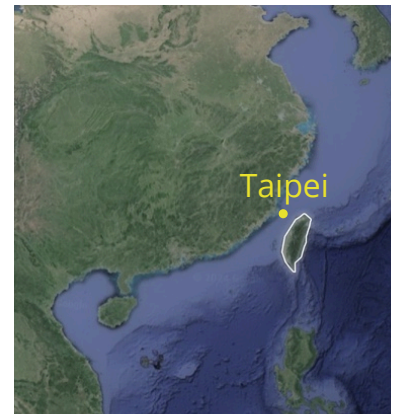
All communication with the organizing committee will be conducted in English.



PROJECT SITE

Before the Charrette, selected students will be provided with detailed information of the area. At the end of the event, participants will be asked to present, a design or a planning concept and a written summary explaining their works.

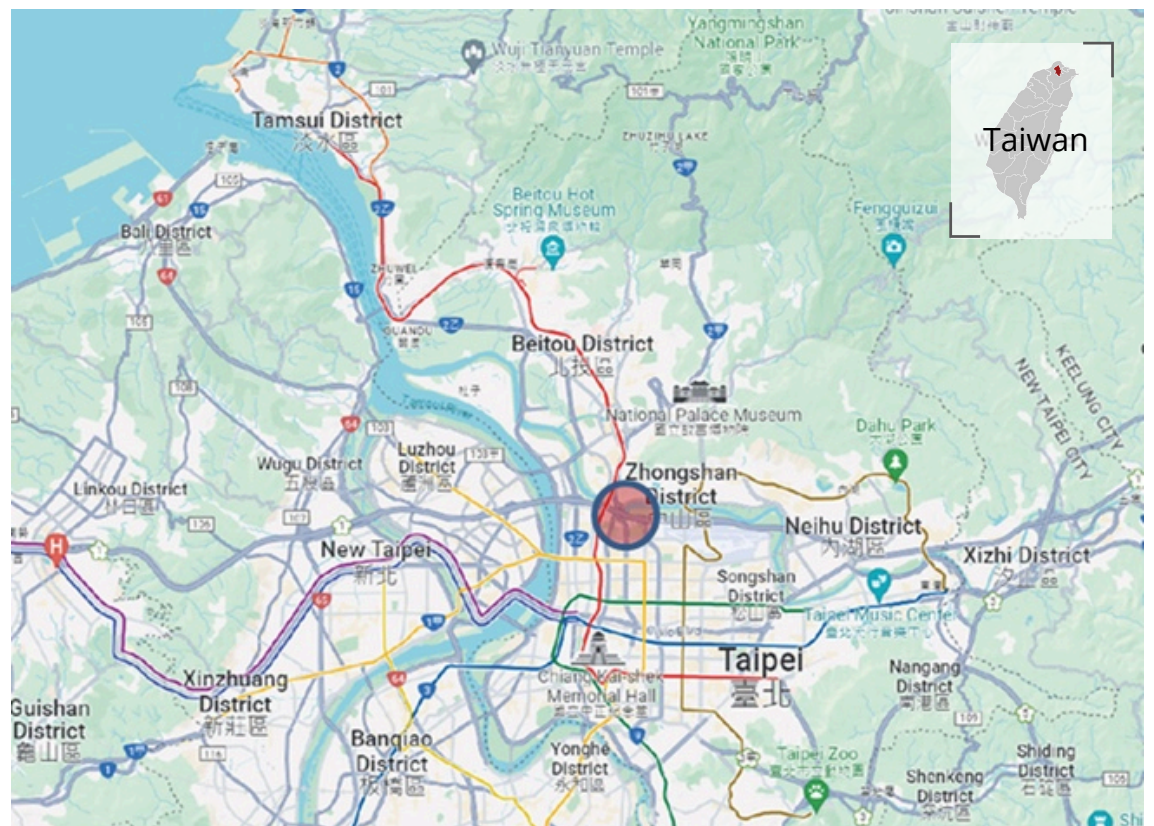
在設計營之前，學生將會收到有關該地區的詳細基地資訊。活動結束時，參與者將被要求以設計或規劃概念，並附上書面摘要來展示他們的工作。



1. SITE LOCATION

The design camp practice base is planned to be in the Yuanshan area, at the heart of Taipei City.

本設計營規畫設計的練習基地圓山地區位於臺北盆地中心，位台北市核心。



2.DESIGN SITE ZONING

The site has a various of resourcess.After the changes of the times and urban renewal, many valuable resources have been hidden. Each zone has unique value and potential waiting for us to explore. We hope that after planning and design, these places will be transformed into original ones. Some values are reflected and more possibilities are explored.

基地擁有許多各式各樣的資源，經過時代變遷與都市更新後，有許多寶貴資源被隱沒，每個分區都有獨特的價值與潛力等待我們去發掘，希望這些地方經過規劃設計後，將原有的價值體現出來以外，並發掘其更多的可能性。



I.YUAN SHAN CULTURAL&TAIPEI EXPO PARK

圓山文化遺址與台北花博公園

The Yuan Shan Cultural offers a unique opportunity for landscape design students to immerse themselves in a historical and cultural setting.Or Taipei Expo Park is one of the large public park in Tapei,its was held the 2010 Taipei International Flora Expo and Former was old Taipei Children's Paradise.So divided the site into five small sites for design.

圓山文化遺址為景觀設計學生提供了一個獨特的機會，讓他們能夠沉浸在一個歷史和文化的環境中。或台北花博公園是台北大型公共公園之一，它曾舉辦2010年台北國際花卉博覽會並且前身為舊兒童樂園。所以將基地分為五個小基地進行設計。



Imagesource:<http://tamsui.dils.tku.edu.tw/wiki/index.php/圓山遺址>
圖片來源: 張思穎



Image source:<https://www.tripmoment.com/trips/14277>
圖片來源: TripMoment 時刻旅行

II. TAIPEI BAO-AN TEMPLE AND COMMUNITY

台北保安宮周遭

Historical Significance: Taipei Bao-An Temple, with its centuries-old history dating back to the Qing Dynasty, stands as a testament to the city's cultural heritage. Its traditional architecture, intricate carvings, and ceremonial spaces offer students insight into traditional Chinese temple design and religious practices. The Taipei Confucius Temple is a cultural landmark dedicated to the memory of Confucius, the great Chinese philosopher. Constructed in 1879 during the Qing Dynasty. The temple is not only a place of worship but also a center for cultural activities and education. With its rich history and cultural significance, the Taipei Confucius Temple remains a revered site for locals and visitors alike, offering a tranquil oasis in the bustling cityscape.

Cultural Diversity: The Community surrounding Taipei Bao-An Temple is a melting pot of cultural influences, reflecting Taiwan's diverse heritage. Students can explore the vibrant street life, bustling markets, and diverse communities that contribute to the area's unique identity.

歷史意義：台北保安宮建於清朝，具有幾百年的歷史，是台北市文化遺產的象徵。其傳統建築、精美雕刻和典禮空間讓學生深入了解中國傳統寺廟設計和宗教實踐。台北孔子廟，建於清朝1879年，紀念至聖先師孔夫子。不僅是一個供崇拜的場所，還是文化活動和教育的中心。憑藉其悠久的歷史和文化意義，孔子廟仍然是在地人和遊客的寶貴之地，為他們提供了一個在繁忙的城市中享受寧靜的綠洲。

文化多樣性：台北保安宮周邊地區是文化多元性的結合，反映了台灣豐富的文化遺產。學生可以探索充滿活力的街道生活、熙來攘往的市場和多元化的社區，這些為該地區的獨特注入了活力。



Image source: Taipei Bao-An Temple
圖片來源: 台北保安宮



The Taipei Confucius Temple
(Image source: The Merit Times/圖片來源: 人間福報)

III. THE GRAND HOTEL & CHIANTAN YOUTH ACTIVITY CENTER & WATERFRONT 圓山飯店與劍潭青年活動中心以及圓山河濱公園

The Grand Hotel, with its iconic architecture and historical significance, can be a symbol of Taipei's rich heritage and cultural identity. Integrating this landmark into the landscape design can enhance the sense of place and provide residents and visitors with a unique destination for leisure and cultural activities. The Jianguan Youth Activity Center, situated near the Keelung River, presents an opportunity to revitalize the waterfront and create dynamic public spaces along the riverbank. By incorporating amenities such as parks, promenades, and recreational facilities, this area can become a hub for outdoor activities and social interaction, contributing to the well-being and vitality of the community.

圓山飯店以其標誌性的建築和歷史意義，可以成為台北豐富的文化遺產和身份的象徵。將這一地標納入景觀設計中可以增強地方感和為居民和遊客提供獨特的休閒和文化活動目的地。劍潭青年活動中心位於基隆河附近，為改造河岸和建立沿河區域的動態公共空間提供了機會。藉由納入公園、步行道和娛樂設施等設施，這一區域可以成為戶外活動和社交互動的中心，有助於社區的福祉和活力。



Image source: [Image source: Taipei Bao-An Temple](#)
圖片來源: 台北旅遊網



Image source: Sz-ming Chen
圖片來源: Sz-ming Chen

IV. LIN AN TAI HISTORICAL HOUSE & WATERFRONT

林安泰古厝暨河濱公園

Historical Heritage: Taipei Lin An Tai Historical House stands as a testament to Taiwan's rich cultural heritage, showcasing traditional Taiwanese architecture and craftsmanship. Students can explore the intricacies of traditional courtyard design, architectural detailing, and historical preservation practices.

Waterfront Setting: Situated near the Keelung River, the site offers a unique waterfront context for landscape design exploration. Students can study the dynamics of water-edge environments, waterfront revitalization strategies, and the integration of ecological principles into urban landscapes.

歷史遺產：台北林安泰古厝展示了台灣豐富的文化遺產，展示了傳統台灣建築和工藝。學生可以探索傳統庭院設計、建築細節和歷史保護實踐的複雜性。水岸環境：該地點靠近基隆河，為景觀設計探索提供了獨特的水岸環境。學生可以研究水岸環境的動態、水岸更新戰略以及生態原則在都市景觀中的融合。



Image source: IG-stliu_photography



Image source: <https://www.travel.taipei/>
圖片來源: 台北旅遊網

V.TAIPEI YUANSHAN NATURAL LANDSCAPE PARK

圓山自然風景區

Cultural Heritage: The vicinity of Taipei Yuanshan Natural Landscape Park is steeped in cultural heritage, with historic landmarks, temples, and traditional neighborhoods dotting the landscape. Students can study the cultural significance of these sites and incorporate elements of cultural preservation into their landscape designs.

Ecological Considerations: As an urban green space, the site offers valuable opportunities for ecological restoration and biodiversity enhancement. Students can explore strategies for sustainable land management, habitat creation, and urban greening initiatives to promote environmental resilience and enhance ecosystem services.

文化遺產：圓山景點附近充滿文化遺產，有歷史標誌性建築、寺廟和傳統社區。學生可以研究這些地點的文化意義，並將文化保護元素融入到他們的景觀設計中。
生態考量：作為都市綠地，該地提供了寶貴的生態恢復和生物多樣性增強的機會。學生能探索可持續土地管理、棲息地建立和都市綠化措施，促進環境韌性，增強生態系統服務。



Image source: Myjourney.tw Blog
圖片來源: 2024可大王旅遊網



Image source: The Grand Hotel
圖片來源: 圓山飯店

3. BASIN & MOUNTAIN & RIVER

Taipei is situated in a basin, surrounded by mountain ranges and plateaus. To the north, there are the Datun Mountain Range, the Qixing Mountain Range, and the Wuzhi Mountain Range. To the south, there are the Nangang Mountain Range and the Erge Mountain Range. On the left bank of the Tamsui River, there are the Guanyin Mountain and the Linkou Plateau. The central plain is formed by the alluvial deposits of the three major river systems of the Tamsui River basin: the Dahan River, the Xindian River, and the Keelung River.

台北是屬於盆地地形，北有大屯山系、七星山系、五指山系，南有南港山系、二格山系、淡水河的左岸有觀音山及林口台地包圍著；中間則是淡水河流域的三大水系—大漢溪、新店溪和基隆河所沖積而成的平原。

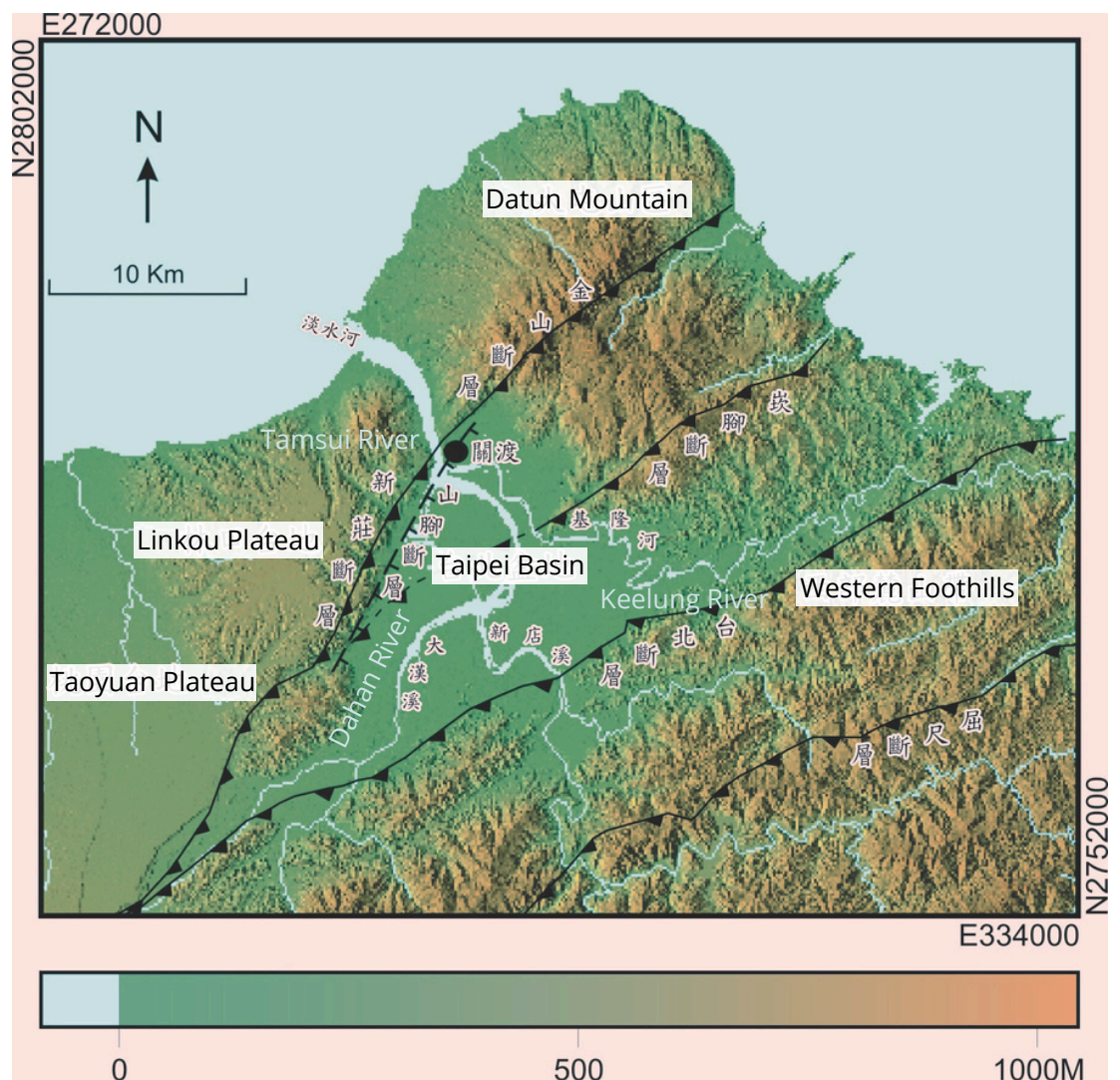


Image source: https://homepage.ntu.edu.tw/~tengls/geo-info_taipei.htm

4. LAND USE SURVEY ANALYSIS

Through land condition surveys, we can gain a deeper understanding of the site, including its location relative to surrounding land uses and current land development status. This information helps us formulate more suitable directions for site development.

透過土地現況調查可以讓我們更進一步的了解基地，知道基地的區位與周遭使用的關係，以及目前的土地發展狀況，能夠幫助我們制定更合宜基地發展的方向。

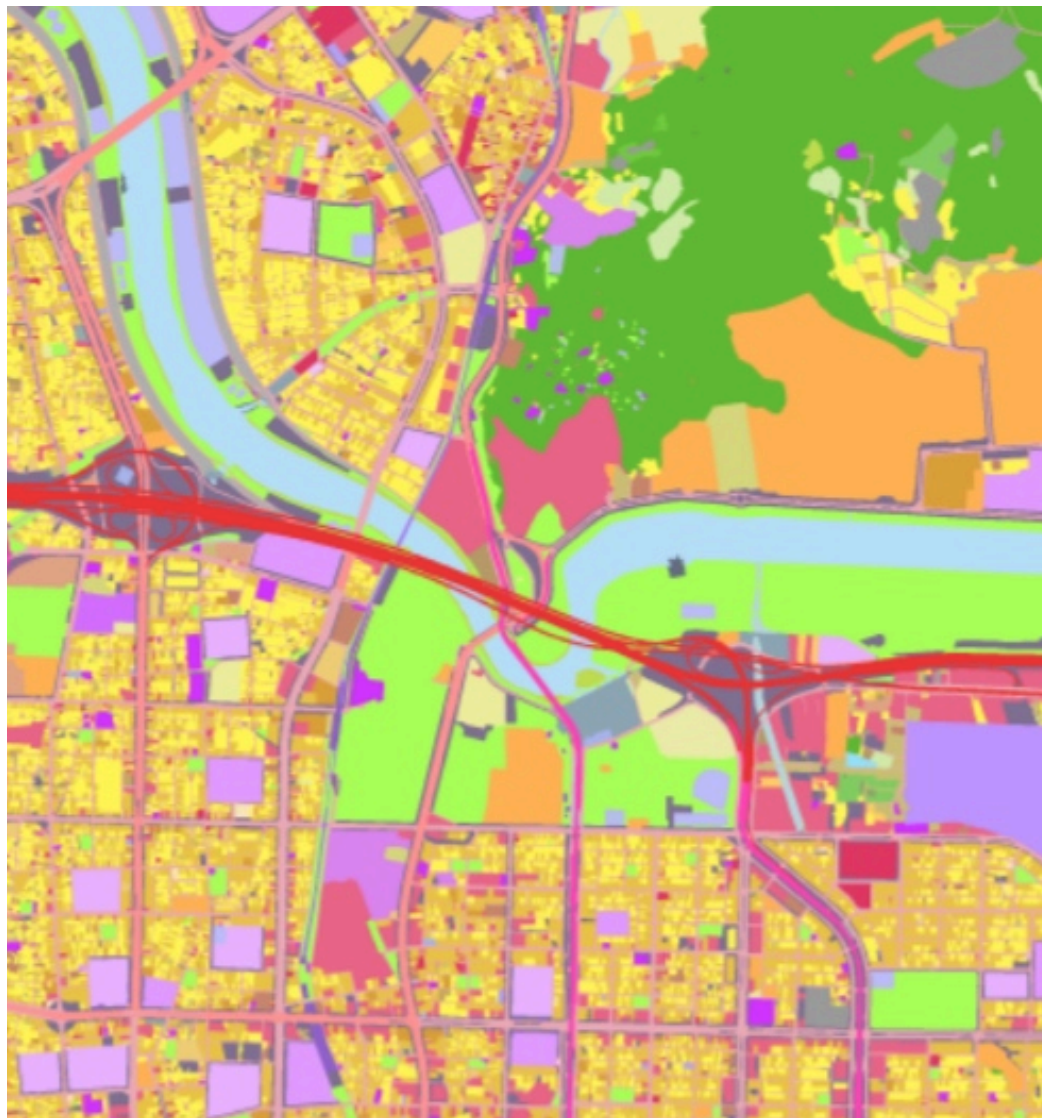


Image source: https://maps.nlsc.gov.tw/T09/mapshow.action?ln_type=web

5. TRANSPORTATION ANALYSIS

The site is located in transportations hub and is an necessary areas to pass through there and back. There are convenient transportations resources including MRT and highways, making it to get elsewhere easily and speedily.

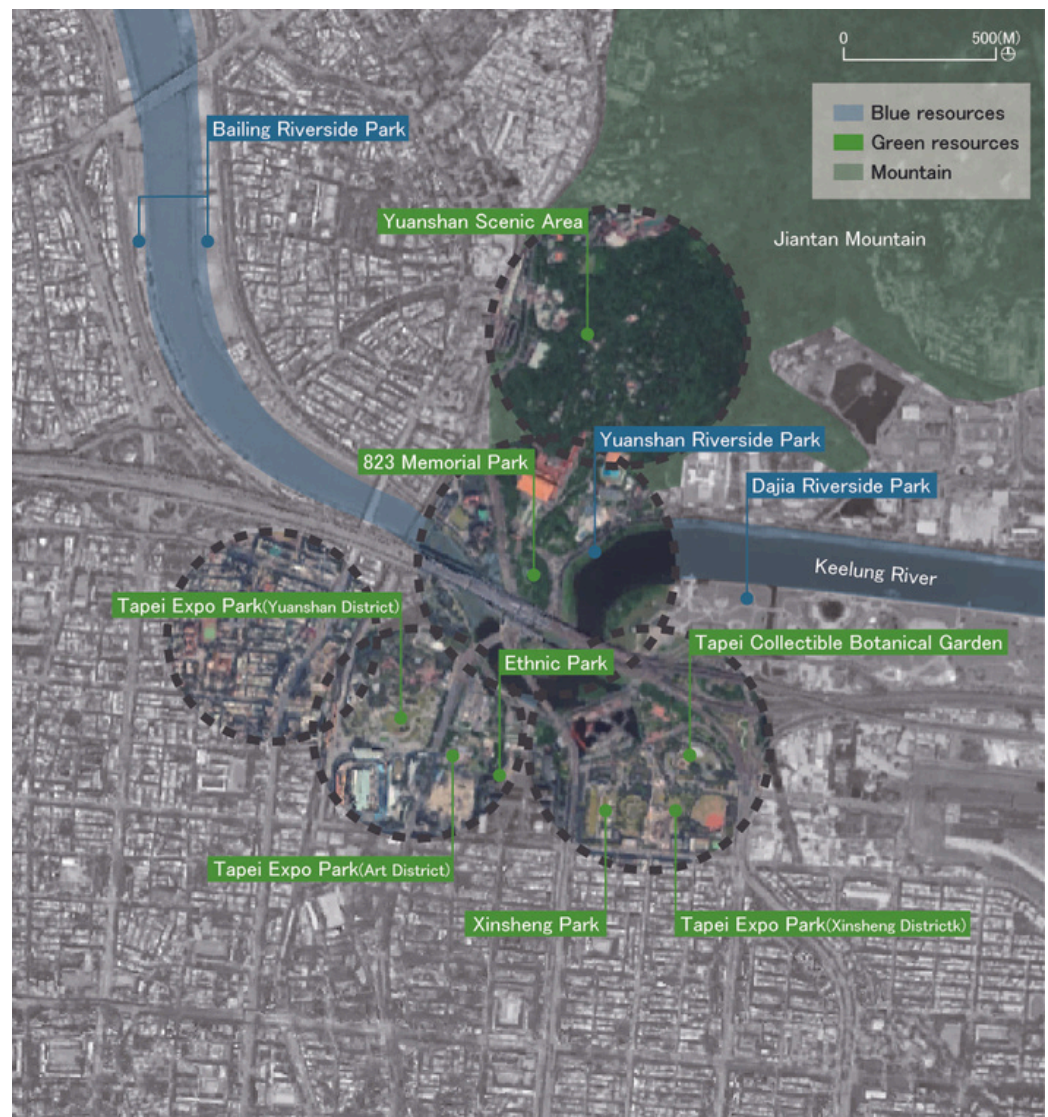
基地地處交通中樞，是往返各地必經之地區。有便利的交通資源，包括捷運以及高速公路，能夠容易且快速到達別處。



6.URBAN OPEN SPACE ANALYSIS

The site has a various of natural resources,including Jiatan moution, Keelung river and many open green space,such as parks or gardens. The most respectative of all is Tapei Expo Park that often held markets or performances and its one of the people's favorite leisure places.

基地擁有豐富的自然資源，包含劍潭山、基隆河以及許多開放綠地，開放綠地像是公園或花園，其中最具代表性的公園是台北花博公園，經常舉辦市集或表演活動，是民眾喜愛的休閒場所之一。



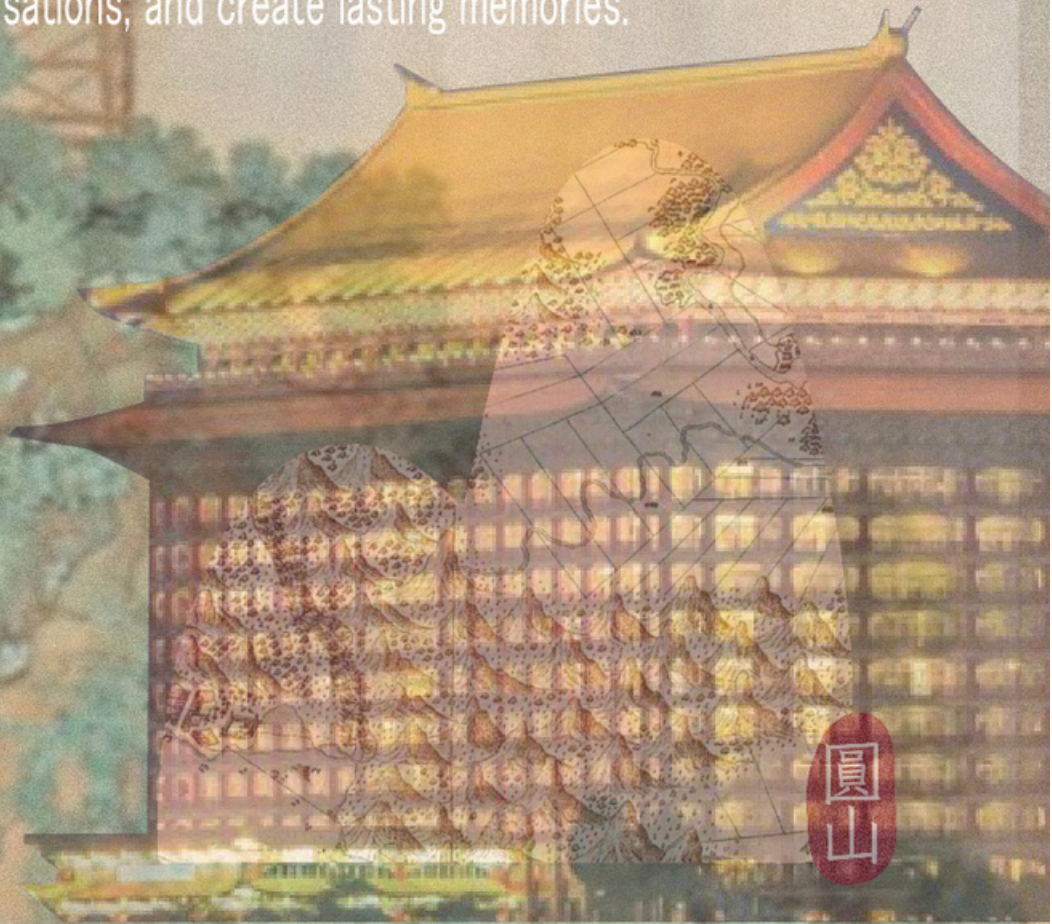
7. HUMANITIES RESOURCES ANALYSIS

The site has a various of humanty resources, having many schools, temples and historical places around, as well as the largest international Shilin Tourist Night Market in Taipei, it attracts a large number of foreign tourists every year, it is an important economic development place in Taipei. Jiatan Youth Activity Center is a service facility that provides accommodation for participants.

基地擁有許多各式各樣的人文資源，周遭有許多學校、廟宇以及歷史空間，還有台北最大的國際士林觀光夜市，每年吸引了大批的外國觀光客，也是台北重要經濟發展之地。劍潭青年中心屬於服務類型設施，提供參加者的住宿。



This special event will be a celebration of our design journey, bringing together design instructors and all students for a night of joy and camaraderie. Get ready to experience an extraordinary night of celebration and creativity, engage in inspiring conversations, and create lasting memories.



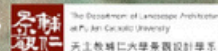
STUDENT CHARRETTE WELCOME PARTY 2024

Date: October 8, 2024

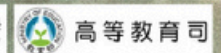
Time: 6:30 PM

Venue: Songhe Hall, Taipei
Grand Hotel (台北圓山飯店)

Organizer



Advisor



Sponsor

